

LabCorp and Professional Co-Op Case Review Blood Panel (#235748)

Professional Co-op Laboratory Testing Services is a cooperative with a large number of physician and healthcare practitioner members, which allows them to lobby collectively to LabCorp for aggressive pricing. LabCorp offers pricing based on volume, and since Professional Co-op has so many members, it gets incredible discounts on lab work. Membership is free for licensed clinicians.

STANDARD PANEL CPT CODES

These are the CPT Codes included in Chris's standard Case Review panel. When ordering for either LabCorp or Professional Co-op, use test number 235748 to include the following:

CPT Code	Name	Cost (as of Sept. 2016)
80053	Comprehensive Metabolic Panel	11,40 US\$
80061	Lipid Panel	11,40 US\$
82306	Vitamin D, 25-Hydroxy	20,37 US\$
82525	Copper, serum	37,24 US\$
82607	Vitamin B12	9,12 US\$
82652	Vitamin D 1,25 di-OH (Calcitriol)	26,10 US\$
82728	Ferritin	6,60 US\$
82746	Folic Acid	28,42 US\$
82977	γ-Glutamyl Transferase (GGT)	3,85 US\$
83036	Hemoglobin A1c	12,16 US\$
83090	Homocysteine	19,00 US\$
83525	Fasting Insulin	19,00 US\$
83540	Iron	3,46 US\$
83550	TIBC, UIBC, % Iron Saturation	3,46 US\$
83615	Lactic Acid Dehydrogenase (LDH)	3,85 US\$
83735	Magnesium, serum	3,85 US\$


83921	Methylmalonic Acid (MMA), serum	45,32 US\$
83970	Parathyroid Hormone (PTH), Intact	20,30 US\$
84100	Phosphorus	3,85 US\$
84436	Thyroxine (T4)	7,20 US\$
84439	Thyroxine (T4), Free	11,38 US\$
84443	Thyroid-stimulating Hormone (TSH)	7,20 US\$
84479	T3 Uptake	7,20 US\$
84480	Triiodothyronine (T3)	7,20 US\$
84481	Triiodothyronine (T3), Free	11,38 US\$
84482	Reverse T3	9,79 US\$
84550	Uric Acid	3,80 US\$
84630	Zinc, plasma or serum	28,64 US\$
85025	Complete Blood Count (CBC) with differential	7,60 US\$
86141	C-Reactive Protein (CRP), cardiac, high sensitivity	14,44 US\$
86376	Thyroid Peroxidase (TPO) Antibodies	14,21 US\$
86800	Thyroglobulin Antibody	14,21 US\$
	Subtotal:	415 US\$
36415	Venipuncture	7,00 US\$
		Total: 422 US\$

HOW TO ORDER THE PANEL THROUGH PROFESSIONAL CO-OP:

This is what we put on the requisition form:

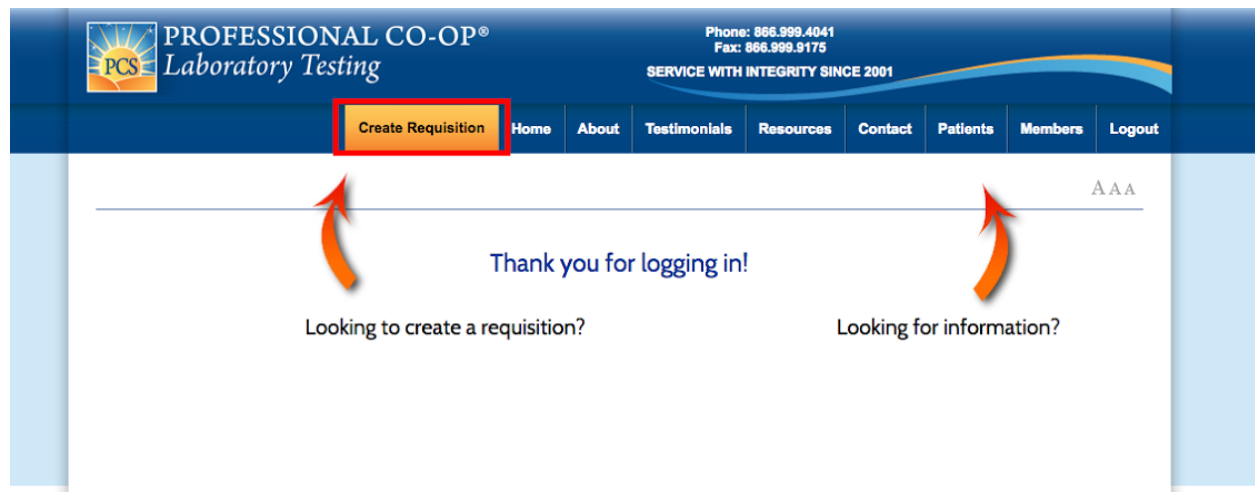
CR Blood Panel with Lipids [LabCorp] {F} CPT: 83036, 84550, 80053, 84100, 83735, 83615, 82977, 83550, 83540, 82728, 82607, 82306, 80061, 86141, 83090, 84443, 84436, 84479, 84480, 82525, 84630, 83921, 85025, 82746, 83970, 82652, 86376, 86800, 84481, 84439, 36415, 84482 > LabCorp test number 235748

Take the following steps to place your order on the Professional Co-op website (please note that costs, lab numbers and websites may change so use this as a general guide):



Professional Co-op Laboratory Testing website interface. The header includes the logo, phone/fax numbers, and a navigation bar with 'Create Requisition' highlighted. Below the navigation bar are tabs for 'FREQUENTLY ORDERED', 'A-Z TEST LIST', 'SUPER PANELS', 'MINI PANELS', and 'ALLERGY TESTING'. A 'Test Search' box contains the code '234627' and a 'SEARCH' button. A yellow sidebar on the right contains instructions: 'To remove a test, click Continue to Step 2 below.' and 'Your Requisition is currently empty.' A 'show/hide' button is at the bottom of the sidebar.

1. Log into your Professional Co-op account and select **Create Requisition**.



2. In the Test Search box, type in the code 234627 for the Case Review panel.


PROFESSIONAL CO-OP®
Laboratory Testing

Phone: 866.999.4041
 Fax: 866.999.9175
 SERVICE WITH INTEGRITY SINCE 2001

[Create Requisition](#)
[Home](#)
[About](#)
[Testimonials](#)
[Resources](#)
[Contact](#)
[Patients](#)
[Members](#)
[Logout](#)

AAA

234627 Opti-Integral Panel V

Price per Unit (piece):
\$415.00

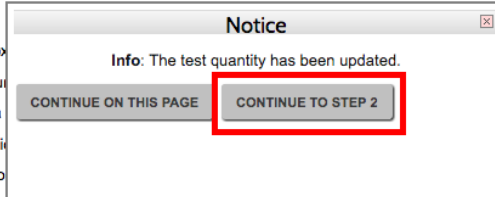
FASTING/AVOID EXERCISE

Components

Comprehensive Metabolic Panel;
 Uric Acid;
 GGT;
 LDH;
 Magnesium, Serum;
 Phosphorus;
 Vitamin B12;
 Folic Acid;
 Iron;
 TIBC;
 Percent Saturation;
 UIBC;
 Ferritin;
 Vitamin D, 25-OH;
 Vitamin D 1,25 di-OH (Calcitriol);

3. The test will populate. Scroll to the bottom and select it.

Vitamin D 1,25 di-OH (Calcitriol);
Lipid Panel with Total Cholesterol/HDL Ratio and LDL/HDL Ratio;
Hemoglobin A1c;
PTH, Intact;
C-Reactive Protein, Cardiac;
Homocysteine;
Thyroid Panel with TSH;
Triiodothyronine (T3), Total;
Thyroxine (T4), Free, Direct;
Triiodothyronine (T3), Free;
Thyroglobulin Antibody;
Reverse T3;
Thyroid Peroxidase Antibody;
Copper, Serum;
Zinc, Plasma;
Methylmalonic Acid;
Complete Blood Count



[ADD TO REQUISITION](#)

[BACK TO TEST LIST](#)

My Account / Orders

[Order History](#)

4. Select **Continue to Step 2**.

PROFESSIONAL CO-OP® Phone: 866.999.4041 Fax: 866.999.9175
SERVICE WITH INTEGRITY SINCE 2001

DO NOT USE YOUR BROWSER'S BACK BUTTON.
To add more tests to your order, click the orange "Want to add more tests?" button.

Testimonials Resources Contact Patients Members Logout

Step 2

Please Verify Order

TEST CODE	TEST NAME	PRICE	REMOVE	SUBTOTAL
234627	Opti-Integral Panel V	\$415.00	REMOVE	\$1 245.00
Subtotal				\$1 245.00
Total				\$1 245.00
Tax Total				\$0.00

[« Want to add more tests?](#)

[Continue to Step 3](#)

ONLY test codes will appear on patient requisition.

There will be a \$7.00 Venipuncture Fee if your patient utilizes a LabCorp Patient Service Center.

Test links for Lab Tests Online and ClinLab Navigator **ONLY** reflect technical information. The links **DO NOT** reflect test components or collection information for specific test codes.

- Select **Continue to Step 3**. Note the \$7.00 venipuncture message. You'll want to make sure your patient is charged for this. We roll ours into the cost of the test.

PROFESSIONAL CO-OP® Phone: 866.999.4041 Fax: 866.999.9175
SERVICE WITH INTEGRITY SINCE 2001

PCS Laboratory Testing

Create Requisition Home About Testimonials Resources Contact Patients Members Logout

Step 3 Patient Information

[ADD A NEW PATIENT](#)

[EXISTING PATIENT SEARCH >>>](#)

- Either add a new patient or search for an existing patient, depending on the circumstance.

PLEASE REVIEW THE PATIENT DEMOGRAPHIC INFORMATION AND CONFIRM YOUR ORDER!

Special Instructions

Please indicate any required clinical information or if this order is a **RECOLLECTION**.
Please leave this blank if not applicable.

CONFIRM ORDER

☐ I agree to the [Terms of Use](#)

There will be a \$7.00 Venipuncture Fee if your patient utilizes a LabCorp Patient Service Center.

Test links for Lab Tests Online and ClinLab Navigator **ONLY** reflect technical information. The links **DO NOT** reflect test components or collection information for specific test codes.

Professional Co-op Services, Inc., 850 West Dania Beach Blvd, Dania Beach, FL 33004

T: 866.999.4041 | F: 866.999.9175 | E: customerservice@professionalco-op.com

All orders collected at a LabCorp Service Center are subject to a \$7 venipuncture charge

7. Select the box that you agree to the Terms of Use and then select **Confirm Order**.
8. Note that there are two **Log Out** buttons to select before you are actually logged out of the system.